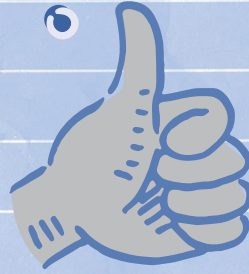


SUPPORTING OUR KIDS, TOGETHER



Over the next few weeks, Sparta Elementary Schools will be sharing information about the programs and services we offer to support student social emotional health and how the school and home can work together to help students navigate conflicts as they arise.

Sparta Area Schools is actively implementing social emotional learning (SEL) into our elementary schools. Every K-5th grade class has a monthly SEL lesson which is based on the Michigan Model for Health Curriculum.

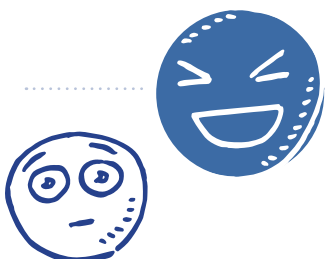
Students are taught skills/concepts such as friendship, respecting differences, managing feelings, and conflict resolution.



What is Social Emotional Learning (SEL)?

[CASEL](#) defines social and emotional learning (SEL) as an integral part of education and human development.

SEL is the process through which all young people and adults acquire and apply the knowledge, skills, and attitudes to develop healthy identities, manage emotions, achieve personal and collective goals, feel and show empathy for others, establish and maintain supportive relationships, and make responsible and caring decisions.



If you would like to speak to one of our student support staff regarding any of this information or if you have other questions/concerns, please [contact us](#).